



2025 Fly-In Training: General Information

Discussion Points

- **Women's Mining Coalition – History of Fly-In**
- **Offices Targeted for Meetings**
- **Daily Schedule**
- **Helpful Tips**
- **Map – House and Senate Information**
- **CongressPro**
- **Events: Orientation, Reception & Baseball Game**

Women's Mining Coalition

Our Mission

We advocate for today's modern domestic mining industry which is essential to our Nation.

Our History

Three female geologists formed WMC in 1993 to give women who work in mining opportunities to meet with members of Congress to explain the importance of mining.

Our Members

Since 1993, hundreds of women have participated in our annual Washington, D.C. Fly-Ins and state-based meetings with members of Congress and federal agencies.



Hill Meetings (Offices targeted)

House:

- Appropriations Committee
- Energy and Commerce Committee
- Natural Resources Committee
- Science, Space, and Technology Committee
- Transportation and Infrastructure Committee
- Education and Workforce

Senate:

- Agriculture, Nutrition and Forestry
- Appropriations Committee
- Energy and Natural Resources Committee
- Environment and Public Works Committee
- Commerce, Science, and Transportation Committee
- Health, Education Labor and Pensions
- Indian Affairs

Daily Schedule

- Morning Meetings – Senate Side
- Afternoon Meetings – House Side
- Morning Coffees/Breakfast by state (senate hosted) on T/W/Th
- Agency Meetings - TBD

2:00 PM

Rachel

**Congressman Jim Costa
D - California**

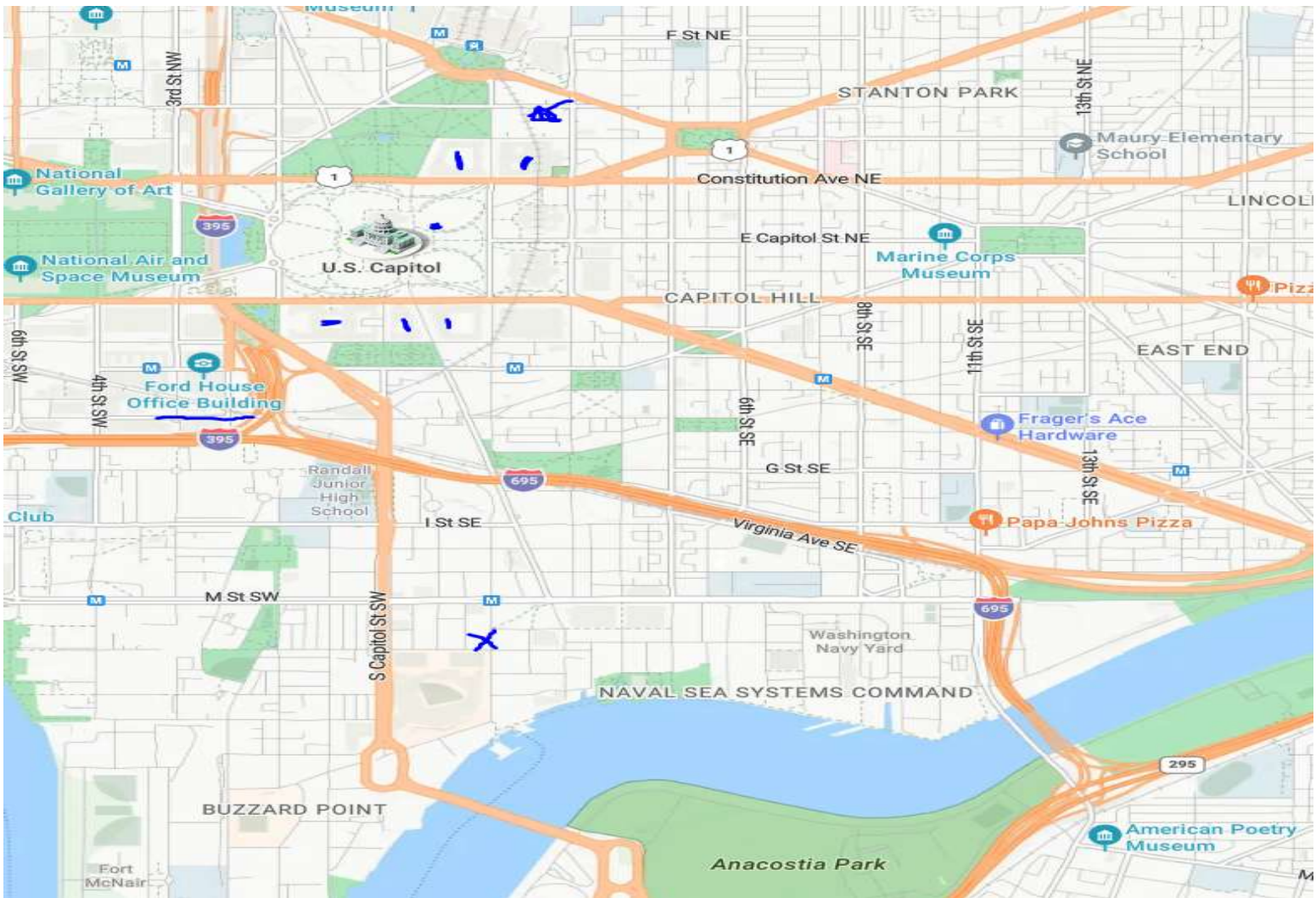
**Jack West, Leg Aide
2081 Rayburn**

Daily Schedule (Cont.)

15-Apr-24							
1:00 PM	1:30 PM	2:00 PM	2:30 PM	3:00 PM	3:30 AM	4:00 PM	
Debbie Congressman David Joyce R - Ohio Edie Doman 2065 Rayburn	Rachel Congressman Jim Costa D - California Jack West, Leg Aide 2081 Rayburn	Debbie Congressman John Curtis R - Utah Grace Bellone, Staffer 2323 Rayburn	Katie Congressman Julia Brownley D - California Scott Weathers	Deantha Congresswoman Kim Schrier D - Washington Kei Fujisawa, Leg Asst		Picture at the Capitol	
Wanda Congresswoman Debbie Dingell D - Michigan Andrew Haring	Katie Congressman Dan Crenshaw R - Texas John McCarthy	Laura Granier Congressman Randy Weber R - Texas Arthur Speck, Sr. Leg Asst 107 Cannon	Rachel Congressman Gus Billakis R - Florida Nathan Stamps	Debbie			
Ruth Congressman Sanford Bishop D - Georgia Jack Birgan, Leg Asst. 2407 Rayburn	Kathy Congressman Hal Rogers R - Kentucky Will Tener 2406 Rayburn	Ruth Congressman Marc Yeasey D - Texas Mike Burnside, Sr. Policy Advisor	Kathy Congresswoman Anna Eshoo D - California Eric Henshall	Ruth Congressman Buddy Carter R - Georgia			
Laura Granier Congressman Michael Guest R - Mississippi Elizabeth Joseph 450 Cannon		Wanda Congresswoman Harriet Hageman R - Wyoming (At Large)		Laura Granier			
Deantha Congressman Bob Latta R - OH Jackie Anderson 2467 Rayburn Elizabeth Z, Carin C, Alli		Deantha Congressman John Moolenaar R - Michigan		Wanda			
DHS - Domestic Supply Chain Roundtable							
Wanda Miki B Elizabeth H Emily Arthen	Ruth Karni B Rebecca T Terri West	Kathy Erin B Crystal K Emily H	Rachel Sara B Jennifer R Virginia	DHS Meeting Attendees From WMC: Emily H Hayley R Alli Terri West Emily Arthen Cherie Leeden Virginia			
Deantha Elizabeth Z Carin C Alli	Debbie Angel L Zohreh I Cherie Leeden	Katie Kenna O Valerie M Hayley R	Laura Granier Kristen R Madyn C	*Make earliest Meetings 3 or 3:30 and then 4 if cl			

Helpful Tips

- What to pack
 - D.C. weather can be unpredictable. The weather is looking *warm* and *humid* currently and you will be walking several miles each day.
 - Bring comfortable shoes. Past participants have worn walking shoes and kept a pair of professional shoes/heels in their bag to change into just before going into meetings. Band-Aids and/or moleskin are also lifesavers.
 - Blazers/cardigans are a sweaty gal's best friend! Throw it on just before your meeting.
 - Bags: Backpack/purse combos are great. Bring something big enough for your supplies but not too big that your arm falls off.
 - An umbrella is never a bad idea
- Communication
 - Once the schedule is released, make sure you grab the phone numbers for others in your group(s), especially your leader
 - Check in with your next day's leader the night before
- Pictures and Video – Lyndsey will invite you to icloud album or if android, please email to wearewmc@wmc-usa.org at the end of each day
- Don't forget to eat!
 - While it is a busy week, you should have time for a quick lunch each day
 - Pack a few easy snacks just in case
 - Cafeterias with many food options:
 - Dirksen Cafeteria
 - Rayburn House Cafeteria
 - Longworth Cafe



[DC Navy Yard Map - Search \(bing.com\)](#)

Senate Buildings

[Buildings & Grounds | Architect of the Capitol \(aoc.gov\)](#)

[Senate Office Buildings | Architect of the Capitol \(aoc.gov\)](#)

Russell Senate Office Building
Dirksen Senate Office Building
Hart Senate Office Building

House Buildings

[Buildings & Grounds | Architect of the Capitol \(aoc.gov\)](#)

[House Office Buildings | Architect of the Capitol \(aoc.gov\)](#)

- Rayburn House Office Building
- Longworth House Office Building
- Cannon House Office Building
- Not commonly Used:
 - Ford House Office Building
 - O’Neill House Office Building

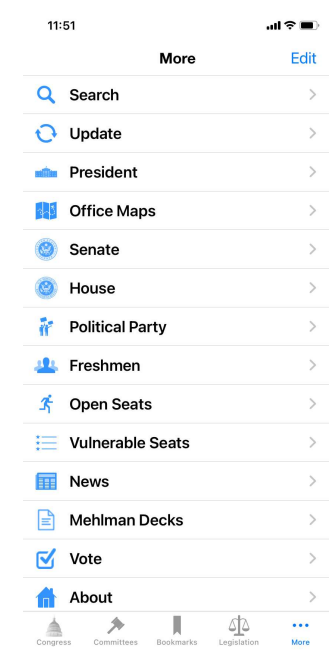
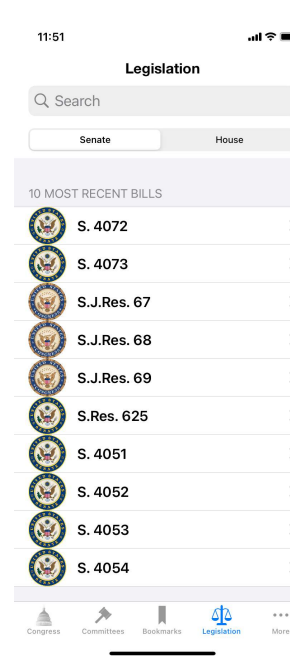
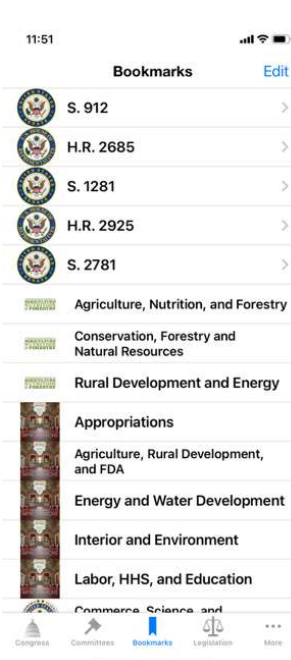
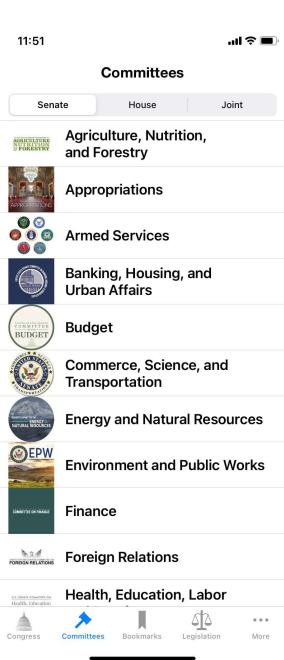
Numbering System of the House Bldgs:

- Rayburn and Longworth are 4 digits
 - Example – 2081 Rayburn
 - 2 – the bldg. (Rayburn = 2, Longworth = 1)
 - 0 – the floor
 - 81 – the Office #
- Cannon is 3 digits, the first digit is the Floor

CongressPro

[Congress in Your Pocket](#) – Main webpage

[Congress Web Apps \(cohenresearchgroup.com\)](#) – Link to desktop version



**If you have any questions, please reach out to Lyndsey.

Weekly Events

- **(Monday 5/5) Participant Orientation – Hosted at the National Mining Association offices (101 Constitution Ave. NW, Ste 500 East, Washington DC, 20001)**
 - Please arrive between 8 and 8:20am at the NMA offices.
 - AEMA Reception – please make sure to RSVP directly to Deanna Stroh(dstroh@miningamerica.org)
- **(Tuesday 5/6) Night at the Ballpark – reception starts at 5:30, game starts at 6:45. Dinner, drinks and fun provided!**
 - If you are staying at the hotel, the entrance to the ballpark is two blocks.
- **(Wednesday 5/7) Closing Reception – Hosted at the Capitol**
 - Speakers Ceremonial Rm H – 217/218, from 4-6pm
- **Final Notes – Headcount for events**
- **Thursday Travel Schedules**



Help us kick off the Women's Mining Coalition Annual Fly-In!

AEMA'S WASHINGTON, D.C. Reception

**Monday, May 5, 2025
5:00 - 7:00 PM**

Dirksen Senate Office Building G-11

AEMA Members, WMC Members and Congressional Members and Staff Welcome!



RSVP

Use the QR Code or
Email dstroh@miningamerica.org



*This event was designed to comply with **House and Senate Ethics Rules**. Please consult with your ethics office for further guidance.*

Questions and Comments

Have fun and enjoy the experience!

Thank You!
