



2024 Fly-In Training: General Information

Presented by: Liz Arnold, Executive Director of NWLA
Lyndsey Wright, WMC Manager

Discussion Points

- **Women's Mining Coalition – History of Fly-In**
- **Offices Targeted for Meetings**
- **Daily Schedule**
- **Helpful Tips**
- **Map – House and Senate Information**
- **Orientation/Reception**
- **CongressPro**

Women's Mining Coalition

Our Mission

We advocate for today's modern domestic mining industry which is essential to our Nation.

Our History

Three female geologists formed WMC in 1993 to give women who work in mining opportunities to meet with members of Congress to explain the importance of mining.

Our Members

Since 1993, hundreds of women have participated in our annual Washington, D.C. Fly-Ins and state-based meetings with members of Congress and federal agencies.



Hill Meetings

Offices targeted for Meetings

House of Representatives

- Appropriations Committee
- Energy and Commerce Committee
- Natural Resources Committee
- Science, Space, and Technology Committee
- Transportation and Infrastructure Committee
- Education and Workforce

Senate

- Agriculture, Nutrition and Forestry
- Appropriations Committee
- Energy and Natural Resources Committee
- Environment and Public Works Committee
- Commerce, Science, and Transportation Committee
- Health, Education Labor and Pensions
- Indian Affairs

Daily Schedule

- Morning Meetings – Senate Side
- Afternoon Meetings – House Side
- Morning Coffees/Breakfast by state
- Agency Meetings

2:00 PM

Rachel

**Congressman Jim Costa
D - California**

**Jack West, Leg Aide
2081 Rayburn**

Daily Schedule

(Cont. 1)

15-Apr-24						
1:00 PM	1:30 PM	2:00 PM	2:30 PM	3:00 PM	3:30 AM	4:00 PM
	Debbie Congressman David Joyce R - Ohio Edie Doman 2065 Rayburn	Rachel Congressman Jim Costa D - California Jack West, Leg Aide 2081 Rayburn	Debbie Congressman John Curtis R - Utah Grace Bellone, Staffer 2323 Rayburn	Katie Congressman Julia Brownley D - California Scott Weathers	Deantha Congresswoman Kim Schrier D - Washington Kei Fujisawa, Leg Asst	Picture at the Capitol
	Vanda Congresswoman Debbie Dingell D - Michigan Andrew Haring	Katie Congressman Dan Crenshaw R - Texas John McCarthy	Laura Granier Congressman Randy Weber R - Texas Arthur Speck, Sr. Leg Asst 107 Cannon	Rachel Congressman Gus Bilirakis R - Florida Nathan Stamps	Debbie	
	Ruth Congressman Sanford Bishop D - Georgia Jack Bryan, Leg Asst. 2407 Rayburn	Kathy Congressman Hal Rogers R - Kentucky Will Tener 2406 Rayburn	Ruth Congressman Marc Veasey D - Texas Mike Burnside, Sr. Policy Advisor	Kathy Congresswoman Anna Eshoo D - California Eric Henshall	Ruth Congressman Buddy Carter R - Georgia	
	Laura Granier Congressman Michael Guest R - Mississippi Elizabeth Joseph 450 Cannon		Vanda Congresswoman Harriet Hageman R - Wyoming (At Large)		Laura Granier	
	Deantha Congressman Bob Latta R - OH Jackie Anderson 2467 Rayburn Elizabeth Z, Carin C, Alli		Deantha Congressman John Moolenaar R - Michigan		Vanda	
DHS - Domestic Supply Chain Roundtable						
	Vanda Niki B Elizabeth H Emily Arthun	Ruth Kami B Rebecca T Terri West	Kathy Erin B Crystal K Emily H	Rachel Sara B Jennifer R Virginia	DHS Meeting Attendees From WMC: Emily H Hayley R Alli Terri West Emily Arthun Cherie Leeden Virginia	
	Deantha Elizabeth Z Carin C Alli	Debbie Angel L Zohreh I Cherie Leeden	Katie Kenna D Valerie M Hayley R	Laura Granier Kristen R Madyn C	*Make earliest Meetings 3 or 3:30 and then 4 if clc	

Orientation & Reception

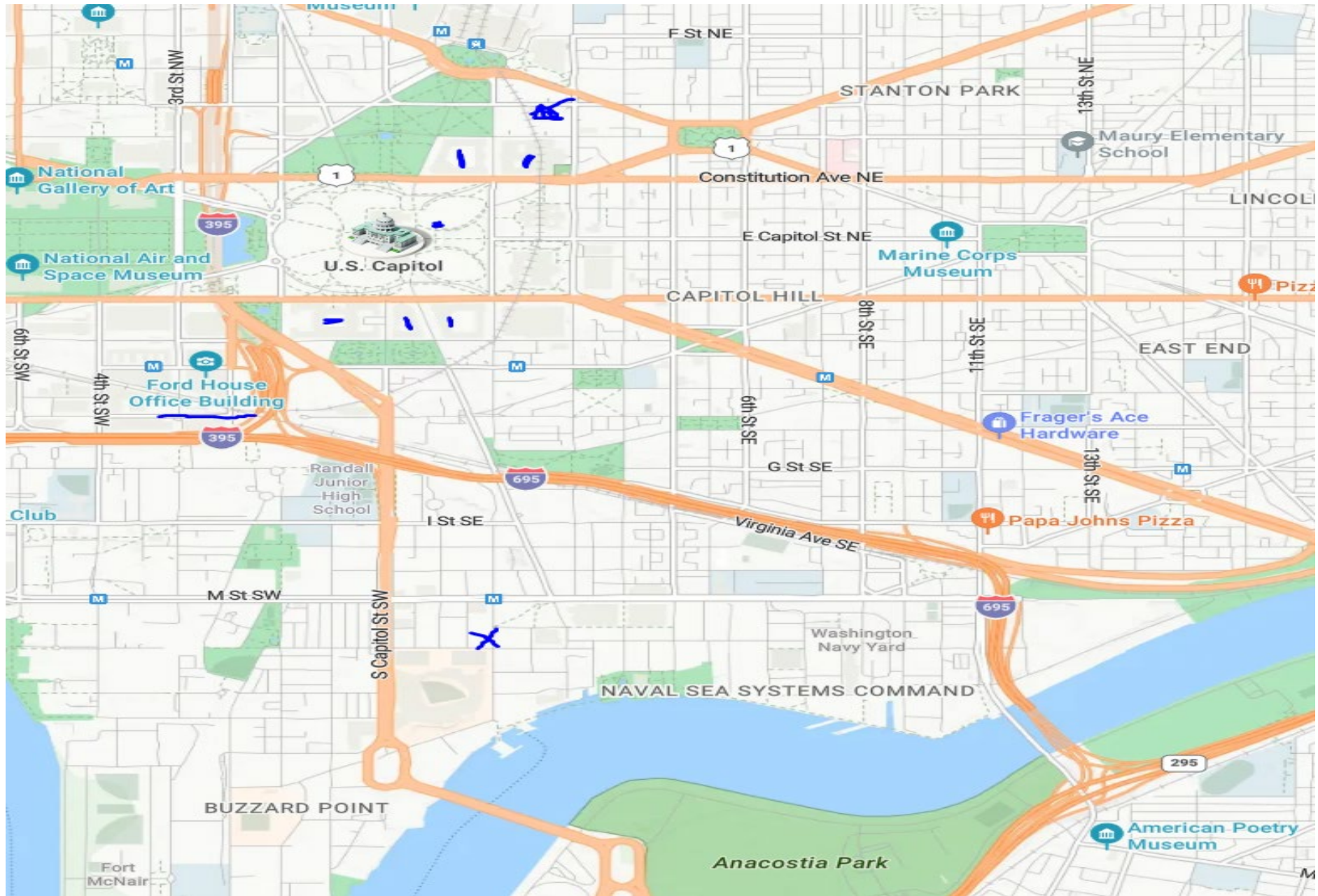
- **Participant Orientation – Hosted at the National Mining Association offices (101 Constitution Ave. NW, Ste 500 East, Washington DC, 20001)**
***Please arrive no later than 8am. Someone will be waiting downstairs at 7:45 to welcome you, but you can also check in at the security desk.**

- **Participant Reception – Sponsored by Resolution Copper, Top of the Yard (top level of Hampton Inn Navy Yard), 6:00 – 8:00 pm Tuesday, April 16th.**



Helpful Tips

- What to pack
 - D.C. weather can be unpredictable. The weather is looking *warm* and *humid* currently and you will be walking several miles each day.
 - Bring comfortable shoes. Past participants have worn walking shoes and kept a pair of professional shoes/heels in their bag to change into just before going into meetings. Band-Aids and/or moleskin are also lifesavers.
 - Blazers/cardigans are a sweaty gal's best friend! Throw it on just before your meeting.
 - Bags: Backpack/purse combos are great. Bring something big enough for your supplies but not too big that your arm falls off.
 - An umbrella is never a bad idea
- Communication
 - Once the schedule is released, make sure you grab the phone numbers for others in your group(s), especially your leader
 - Check in with your next day's leader the night before
- Pictures and Video – Lyndsey will invite you to icloud album or if android, please email to wearewmc@wmc-usa.org at the end of each day
- Don't forget to eat!
 - While it is a busy week, you should have time for a quick lunch each day
 - Pack a few easy snacks just in case
 - Cafeterias with many food options:
 - Dirksen Cafeteria
 - Rayburn House Cafeteria
 - Longworth Cafe



[DC Navy Yard Map - Search \(bing.com\)](https://www.bing.com/maps?search=DC+Navy+Yard+Map)

Senate Buildings

[Buildings & Grounds | Architect of the Capitol \(aoc.gov\)](#)

[Senate Office Buildings | Architect of the Capitol \(aoc.gov\)](#)

Russell Senate Office Building
Dirksen Senate Office Building
Hart Senate Office Building

House Buildings

[Buildings & Grounds | Architect of the Capitol \(aoc.gov\)](#)

[House Office Buildings | Architect of the Capitol \(aoc.gov\)](#)

Rayburn House Office Building

Longworth House Office Building

Cannon House Office Building

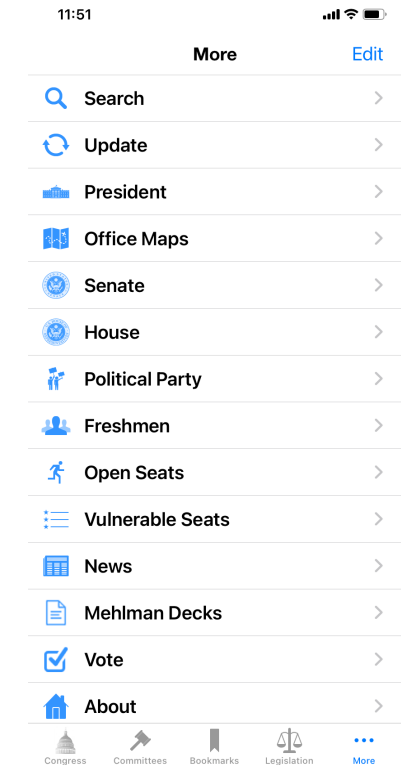
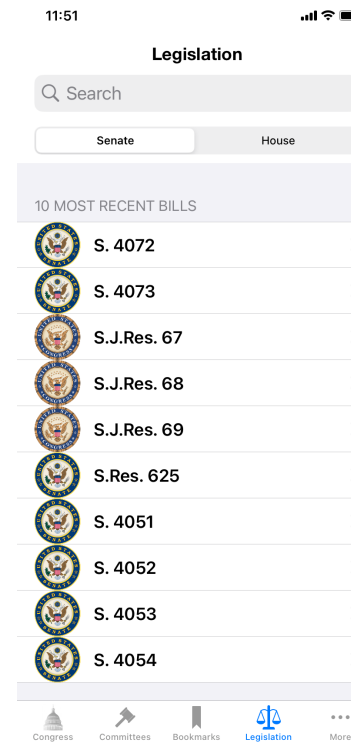
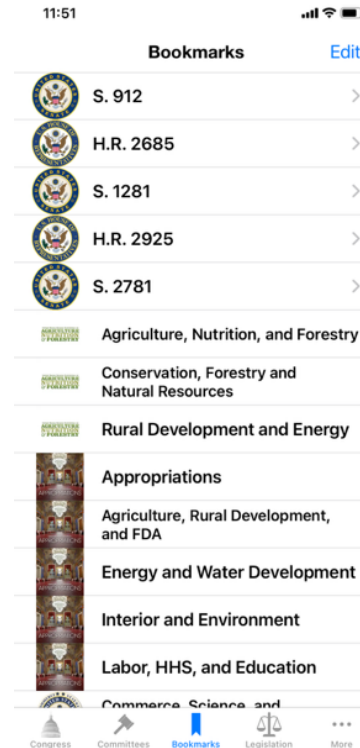
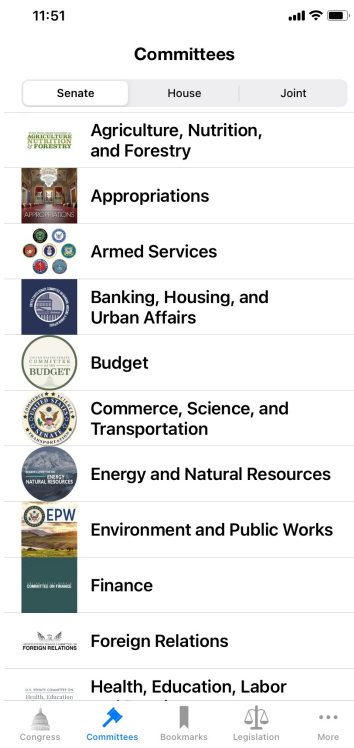
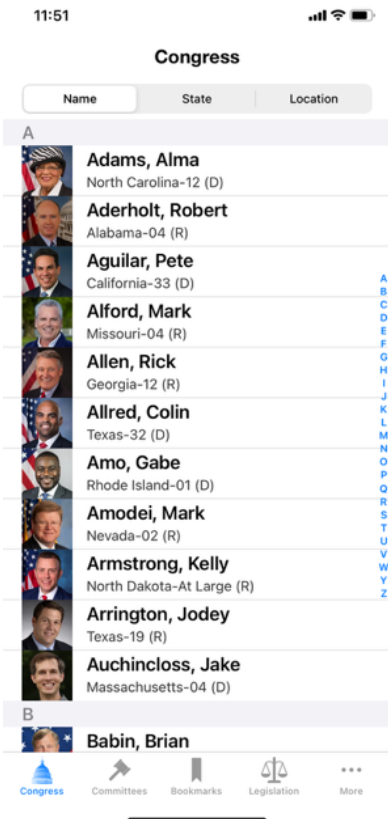
Ford House Office Building

O'Neill House Office Building

CongressPro

[Congress in Your Pocket](#) – Main webpage

[Congress Web Apps \(cohenresearchgroup.com\)](http://cohenresearchgroup.com) – Link to desktop version



**If you have any questions, please reach out to Lyndsey.

What is a WMC Fly-In

- Is it a campaign event? Yes
- Is there showmanship involved? Yes
- Are WMC members performing? Yes
- Are they about the Art of Persuasion? **ABSOLUTELY**
- Are they about politics? **NO**

Concise and Sequenced Communications Are Memorable 1

- Create a rough communications plan:
 - Always Designate Team lead and quickly do Intros
 - Choose top 3 priority issues pertinent to district
 - Each member takes one issue
 - Decide what order each team member speaks

Concise and Sequenced Communications Are Memorable 2

- Each meeting will have unique needs
- Switch up Team leads based on relationships or team member areas of expertise
- Adjust top 3 issues as needed based on district you and pertinent priorities

Research – Know Before You Go

- Statewide Dominant Economic interests
- District Dominant Economic interests
- Geography, major and small towns in the District
- Past/current positions of Member
- Know all committees a member sits on

Managing Expectations

- Star struck
- Keep negative reactions invisible
- Be flexible
- Never be argumentative

Soft Skills & Performance

- Intuitive observations
- What do the staffers see
- What do you project
- Respect is a 2 way street

Questions and Comments

Have fun and enjoy the experience!

Thank You!
